

## Brandt earns director certificate

Congratulations to Director Share Brandt for earning her Board Leadership Certificate (BLC) from the National Rural Electric Cooperative Association.

The BLC is the second step in the director education program and consists of a series of courses focusing in greater depth on specific industry and governance topics. These include subjects such as risk management, power supply, parliamentary procedure, technology and policy development. To earn their BLC, directors must first have completed their Credentialed Cooperative Director Certificate and then complete 10 credits from a choice of over 20 BLC courses.

Brandt, a Butler County REC director since 2018, represents the southwest quarter of Butler County. She and her husband John live on a farm seven miles outside of Allison. They have two grown daughters.



*Director Share Brandt (l) receives her certificate from Board President Duane Rieckenberg.*

**WIN A WEEK-LONG TRIP TO WASHINGTON D.C.**



**NEXT YOUTH TOUR · June 18-25, 2020**

## Youth Tour 2020

### HIGH-SCHOOL JUNIORS:

Butler County REC is now accepting applications for the 2020 Youth Tour to Washington, D.C., June 18-25. Your parents or guardians must be Butler County REC members or residents of Aplington, Fairbank, Fredericksburg or Readlyn.

The top three applicants will be interviewed and awarded a **\$500 scholarship**.

Contact us or go to [butlerrec.coop](http://butlerrec.coop) for more information. Application deadline is Monday, March 9, 2020.

*Butler County REC holiday hours*

We will be closed Tuesday, Dec. 24;  
Wednesday, Dec. 25; and Wednesday, Jan. 1,  
to enjoy the holidays.

Our phones are answered 24/7: 888-267-2726.

*Happy Holidays!*



This Christmas, give yourself the gift of SmartHub! You will be able to schedule payments, manage automatic bill payments, receive new bill notifications, check your usage and so much more. There is also a SmartHub app to make access even easier. Contact us if you have questions.

## Use your space heater safely

Electric space heaters can help quickly warm a room. However, they can be as dangerous as they are convenient if used improperly.

We urge everyone in the home to understand the importance of using space heaters safely:

- Purchase only space heaters that have been safety tested and UL approved. Make sure the unit is equipped with an emergency tip-over shut-off feature and heating element guards.
- Before using a space heater, make sure your smoke and carbon monoxide detectors are in good working condition.
- Check to make sure the heater is clean and in good condition.
- Place the heater out of high-traffic areas and on a level, hard, non-flammable floor surface.
- Space heaters provide supplemental heating. Never use them to thaw pipes, cook food or dry clothing or towels.
- Remember to keep space heaters at least three feet from combustible liquids and flammable items.
- Never allow pets or children near an electric heater.
- Do not overload circuits. Never use extension cords or multiple plugs with a space heater, and make sure the unit is not plugged into the same circuit as other electric appliances.
- If your heater is plugged into a ground fault circuit interrupter (GFCI) and it trips, don't assume there is something wrong with the GFCI. Immediately stop using the heater until a professional can check it.
- Never leave space heaters unattended. Turn off your space heater and unplug it before leaving the room or going to bed.
- Replace older space heaters with newer, safer models.



- Dependents of cooperative members are eligible to apply for a \$1,000 Basin Electric Power Cooperative scholarship for tuition at a two-year or four-year college. Contact your electric cooperative for an application form.
- Corn Belt Power Cooperative partners with **Northwest Iowa Community College** (NCC) in Sheldon, Iowa, to offer four \$500 scholarships. Recipients must be students at NCC studying Electrical Technology, Powerline or Powerline Technology. Contact Sheila Van Engen, (800) 352-4907 ext. 246 or [svanengen@nwicc.edu](mailto:svanengen@nwicc.edu).
- Corn Belt Power partners with **Iowa Lakes Community College** to offer one \$500 scholarship for students enrolled in the Wind Energy and Turbine Technology program. For information, contact Alison Mason, (712) 362-0491 ext. 4491 or [amason@iowalakes.edu](mailto:amason@iowalakes.edu).

## LED holiday lighting rebate

If you purchase new LED holiday lights and decorations, remember that we offer a rebate of up to \$2 for each item purchased (not to exceed purchase price).

Contact us or visit our website for more information.



*The gift of love, the gift of peace, the gift of happiness . . . may these be yours this holiday season.*



*Bluetooth speakers can clarify and amplify volume to satisfy any media enthusiast.*

## Electronic gift guide

This holiday season, give the gift of tech!

### Gifts for those on the go:

A portable charger can keep your on-the-go friend's smart phone and tablet juiced. Purchase for as low as \$20.

A Bluetooth speaker is another great gift. Purchase online or at local retailers for as low as \$30.

**Gifts for the chef:** A Bluetooth-connected thermometer can help your chef ensure a delicious (and safe-to-eat) meal. Prices vary from \$30 to \$200. You can purchase these handy gadgets online or at any big box store.

A digital kitchen scale is a must for any culinary pro. Prices vary depending on the weight the scale can handle, but you can find a 13-pound max weight scale for about \$20 on Amazon.com.

**Gifts for the pet owner:** Pet owners can always keep a watchful eye on their furry friends with a pet tracker. Prices vary depending on the tracker's capabilities, and you can purchase them online or at your local pet store.

You can also purchase surveillance cameras for real-time monitoring for as low as \$40 on Amazon.com.

With so many electronics available today, you're sure to find the perfect gift for your tech-savvy loved ones. Happy shopping!

## May your holiday season be merry and bright

The holiday season is marked by beautiful decorations, delicious food and lots of festivities. We cherish carrying on old family traditions and enjoy creating new ones.

The holidays can also offer an opportunity to slow down and reflect. For all of us at your electric cooperative, we are grateful for you.

One of our founding principles is "Concern for Community." While our main focus is providing safe, reliable and affordable energy, we want to give back. We want to help your communities thrive.

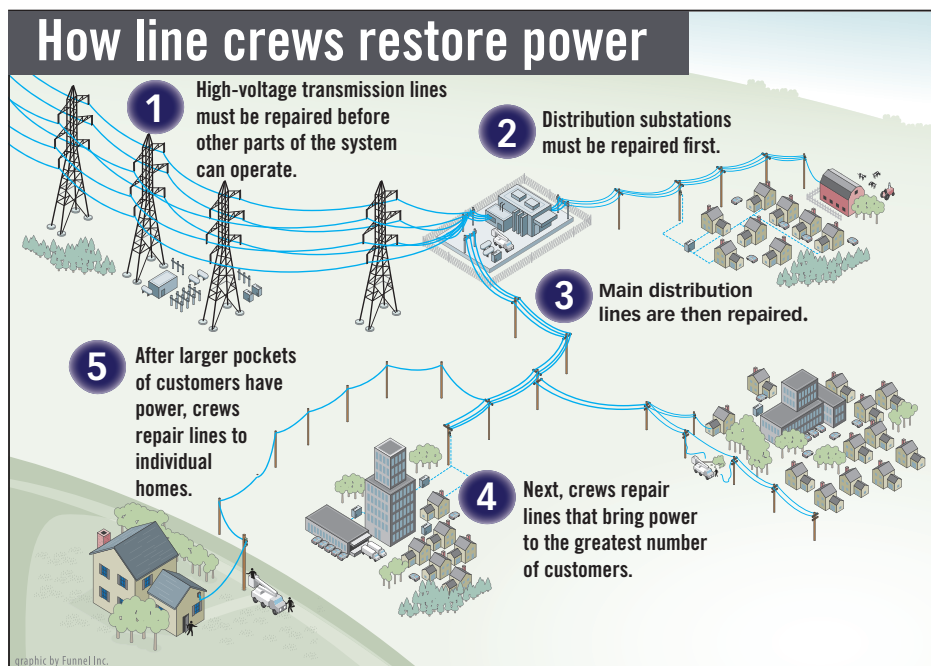
**Reflection** In looking back at this past year, we're grateful that we were able to make a positive impact in your communities through RECare, donations and economic development.

In addition, we work closely with our local high schools to send students to Washington, D.C. on the Youth Tour and to award college scholarships.

There are other ways we can help your communities, whether we're providing information about our programs or helping you find ways to save energy at home, we want you to know we're here to help.

**Looking ahead** Looking ahead to 2020, we hope you will share your opinions with us. We recognize that our members have a valuable perspective, and that's why we continually seek your input. Whether through community events, our social media channels or the annual meeting, we want to hear from you. We are led by you, and we depend on your feedback.

As we prepare for next year, we look forward to the opportunity to serve you and your community. On behalf of the cooperative family, we hope your holidays are merry and bright!



*When a widespread outage occurs, line crews work long hours to restore service safely to the greatest number of members in the shortest time possible. Working from substations to homes results in faster repairs for the most members.*

# Nominating Committee seeks candidates for board of directors

Butler County REC's board of directors have appointed the following members to serve on a nominating committee and select members to run for three director positions that will expire on March 28, 2020:

- **Wayne Jansen, Rockford, 515-570-1744**
- **Robert Kepple, Greene, 641-823-4391**
- **Kathy Bruns, Allison, 319-267-9632**

This committee will meet at the cooperative office in Allison at **11 a.m., Dec. 23, 2019**, to nominate members for the office of director. The election will take place at the cooperative's annual meeting on Saturday, March 28, 2020.

Your co-op's board of directors consists of nine members serving three-year terms. Every year three of the positions come up for election. Each director must reside in the area he or she is elected to represent.

**This year, the board is seeking nominations for the following areas: west half of Floyd County, east half of Floyd County and northwest one-quarter of Butler County.** The members listed below are currently serving as your board representatives. Their terms will expire and at this time are the only names on the ballot:

- **Gerald Schmitt, Rockford**
- **Leland Boyd, Charles City**
- **Tim Schrage, Allison**

If you are interested in running for a position or want to recommend someone residing in any of these areas, please contact a member on the nominating committee before Dec. 22, 2019. Please call our office if you need help to reach a member of the nominating committee.

## Nomination details

The list of nominations will then be posted at the Butler County REC office in Allison. For 10 days after posting this list, additional nominations of members residing in the general area of vacancy may be made by written petition. Forms will be provided at the request of any member and must be signed by no less than 20 members of the cooperative. Any member so nominated must give prior consent to such nomination. The following excerpt from the Butler County REC articles of incorporation and bylaws further explains this process:

Not less than sixty (60) days prior to the regular annual meeting of members, the Board of Directors shall appoint a Nominating Committee of not less than three members of the Association who are not directors of the Association. The Nominating Committee shall prepare a list of nominees, residing in the general area of the vacancy, with at least one member nominated for each vacancy to be filled at the next annual meeting. The written list of nominations of the Nominating Committee shall be posted at the office of the Association not less than thirty days prior to mailing the notice of the annual meeting of members. For ten days after posting of the list of nominations by the committee, additional nominations of members residing in the general area of the vacancy may be made by written petition on forms provided on request of any member, and signed by not less than 20 members of the Association. Any member nominated shall give prior consent to such nomination whether by committee or petition. The notice of the annual meeting of members shall list the names of all nominees for the office of director.

In the event any member who is nominated either by the committee or petition withdraws consent, dies, or for any other reason is unable or declines to serve as a director, prior to the annual meeting but after the deadlines set forth above for posting and mailing of notices, and as a result thereof there remains only one nominee from the general area of any vacancy, then the committee on nominations shall be vested with full authority to nominate an additional member of the Association residing in the general area of the vacancy, so that two nominees from that area exist. If sufficient time exists prior to the annual meeting, the members of the Association shall be notified by mail of the new nomination. If sufficient time does not exist, prior to the election of directors at the annual meeting, a general announcement shall be made concerning the withdrawal, death, etc. of the person originally nominated, and the person subsequently nominated by the Nominating Committee.



## TrinityRail Maintenance Services

Work continues on the TrinityRail Maintenance Services project in the Butler Logistics Park west of Shell Rock. The above photos show two of the buildings being built. The photo on the left looks north toward Hwy. 3, while the photo on the right looks east toward Shell Rock with the ethanol plant in the background. Work is expected to be completed in 2020.

**INtouch** is published monthly for members of Butler County Rural Electric Cooperative  
521 North Main • PO Box 98 • Allison, IA 50602  
PHONES: 319.267.2726 or 888.267.2726 • FAX: 319.267.2566  
OFFICE HOURS: Mon. - Fri., 7:00 a.m. to 3:30 p.m.  
WEBSITE: [www.butlerrec.coop](http://www.butlerrec.coop) • E-MAIL: [butler@butlerrec.coop](mailto:butler@butlerrec.coop)  
Craig Codner, CEO • EDITOR: Anne Sesker, CCC



Follow us on Facebook at  
[www.facebook.com/bcrec](http://www.facebook.com/bcrec)

**smart choices**

Sign up for our e-newsletter at [www.butlerrec.coop](http://www.butlerrec.coop)

This institution is an equal opportunity provider and employer.